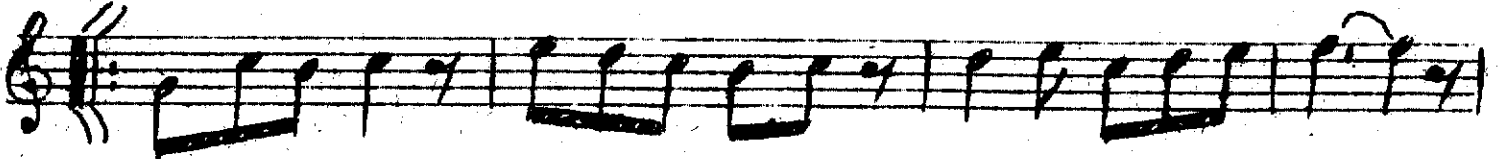
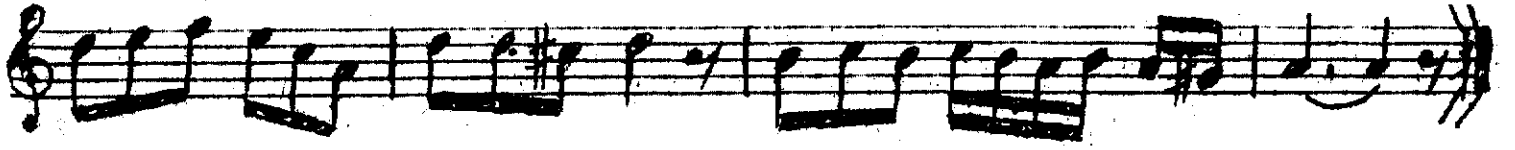
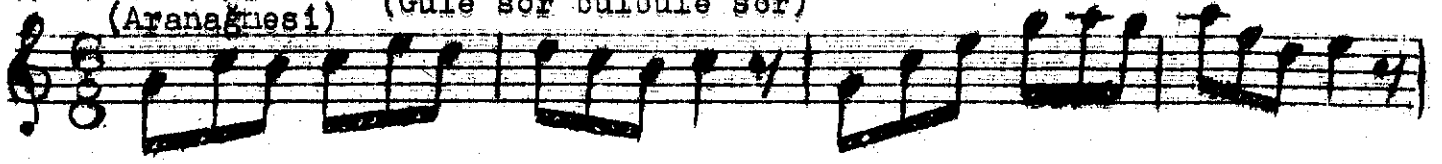


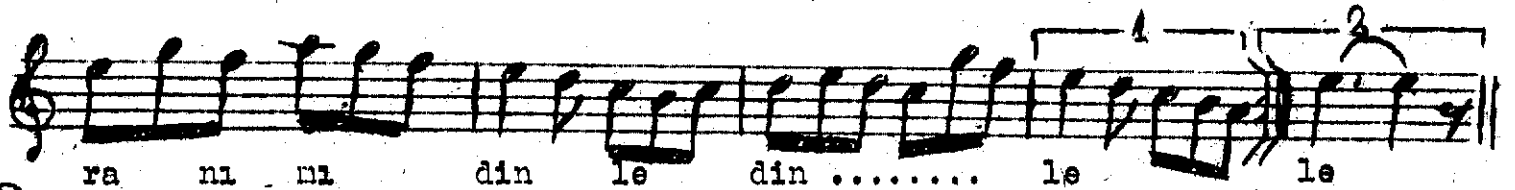
BUSELİK ŞARKI

İsmail Baha Süreksan

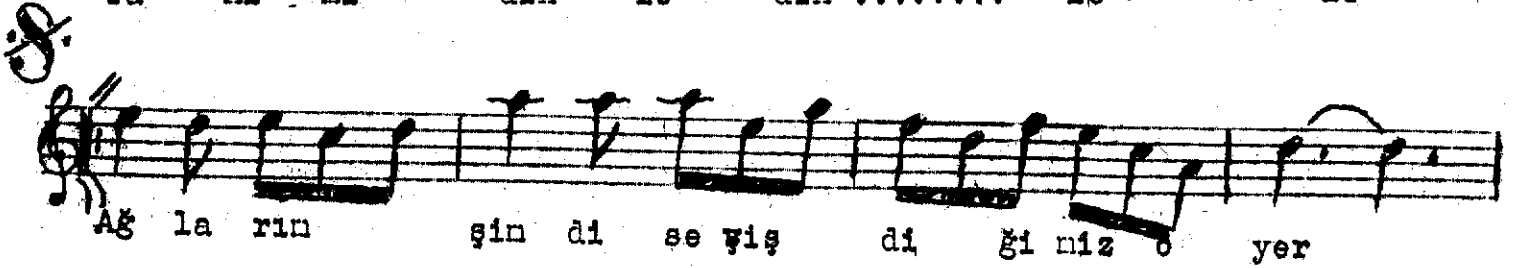
Usûl: Yürük Senâî
(Aranâğnesî) (Güle sor bülbüle sor)



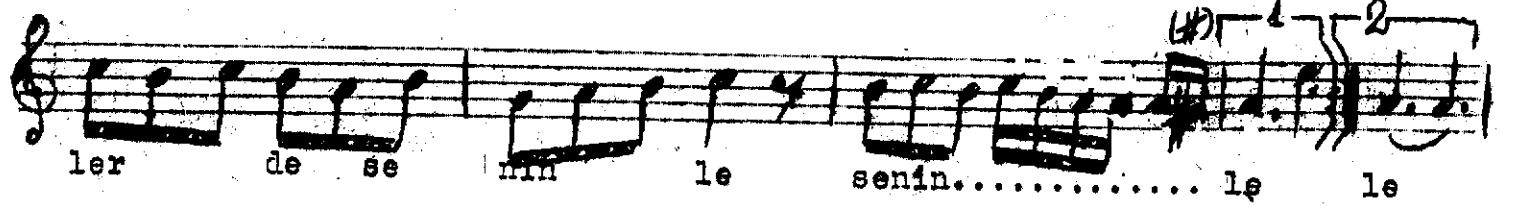
Gü le sor bü l bü le sor ha lî nî hic



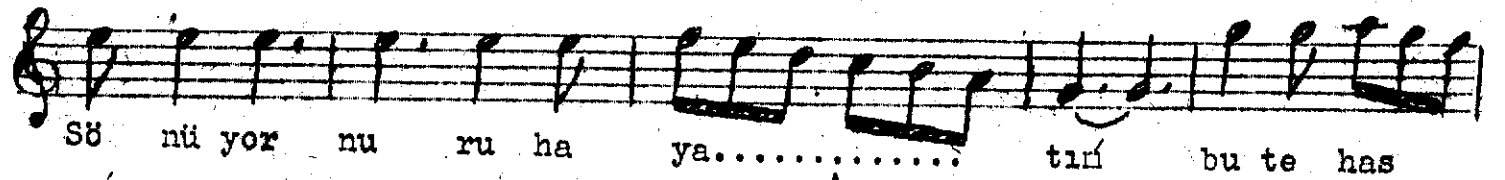
ra nî nî dîn le dîn le le



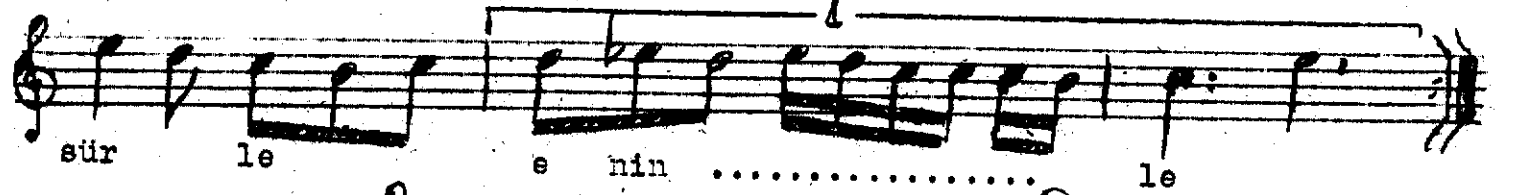
Ağ la rın şin di se viş di ği niz o yer



ler de se nin le senin..... le le



Sö nü yor nu ru ha ya..... tın bu te has



sür le e nin le



e nin le

Güle sor bülbüle sor halimi hicranımı dinle
Ağların şimdi seviştiğiniz o yerlerde seninle
Sönüyor nûr-u hayatın bu tehassürle eninle
Ağların şimdi seviştiğiniz o yerlerde seninle.

İsmail Baha